



**MERCURY**  
**RACING**

| 400R



## THE NEW STANDARD OF PERFORMANCE

Born out of a passion for perfection, the Mercury Racing Verado 400R ups the ante in outboard engine performance. Serious enhancements have been made to the proven 2.6L supercharged dual overhead cam platform, delivering incredible achievements in power and efficiency. A 7,000 RPM rev limit for blistering acceleration, custom Mercury Racing calibration and impressive power-to-weight ratio are just the beginning of the advancements the 400R delivers. This engine isn't for the faint of heart and has been engineered specifically for lightweight high performance hulls that have 1 goal in mind - **SPEED**. Do you have the need?





PERFORMANCE.  
ABOVE ALL ELSE



## COOL AIR INTAKE

› The cool air intake grabs fresh outside air to feed the supercharger and cooler air means more horsepower for big performance gains.



## SUPERCHARGER

› The water-cooled supercharger uses the engine cooling system to reduce air temperatures and supercharger load, increasing supercharger durability and more importantly – POWER.

## CHARGE AIR COOLER

› For even more power, the air is cooled one last time by the charge air cooler after the air exits the supercharger and before it enters the cylinder head for maximum performance.



## ELECTRONIC BOOST BYPASS CONTROL VALVE

› Electronically monitors boost pressure levels to self-compensate for environmental changes, delivering consistent power that you have to feel to believe.



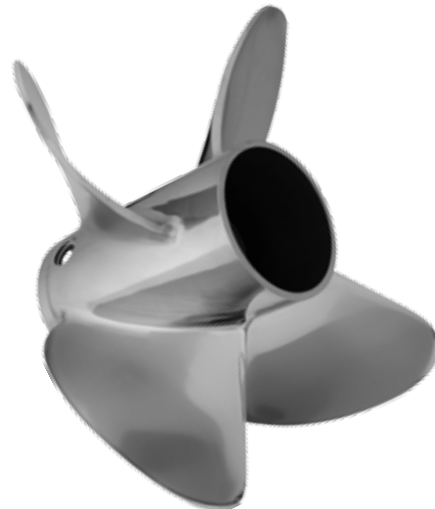
## GUIDE PLATES

› Standard on all 400R models, the stainless steel guide plates stabilize the engine and Advanced Midsection for improved durability and rock solid handling at high speeds and in rough seas.



## ENGINE MOUNTS

› High performance engine mounts designed in conjunction with Mercury's exclusive Advanced Midsection for the perfect combination of handling and overall running quality.



## HIGH PERFORMANCE PROPELLERS

› When we develop any high performance engine at Mercury Racing, we design a complete package all the way down to the propeller. The recommended propellers make use of all four hundred horses for unmatched performance on multi and single engine boats.



Sport Master Gearcase

Offshore Heavy Duty Gearcase

## SPORT MASTER GEARCASE

> Sport Master Gearcase offers heavy-duty durability for boats that travel in excess of 85 mph (74 knots).

The Sport Master gearcase is equipped with low-water pick-ups and a crescent leading-edge torpedo design that maximizes efficiency and speed.

## OFFSHORE HEAVY DUTY GEARCASE

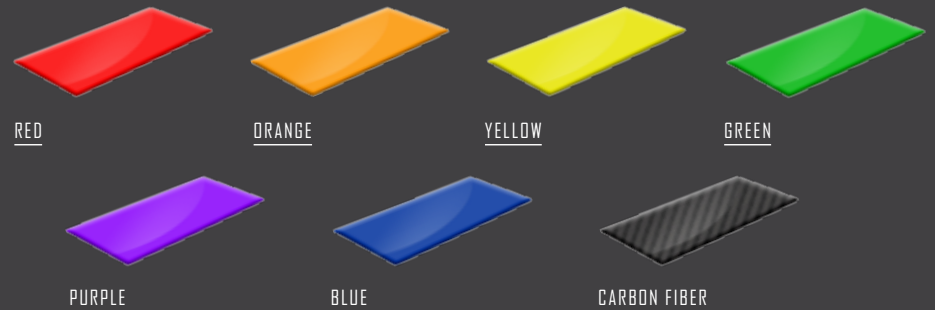
> Offshore Heavy Duty gearcase was designed and engineered by Mercury Racing for the most demanding offshore environments. The Offshore Heavy Duty gearcase features a large 5.44" diameter torpedo providing extra lift for heavier boats.

## THE MERCURY 400R

> The Mercury 400R is offered in Phantom Black or Cold Fusion White.

Seven different colors are available for the graphics package on the Cold Fusion White 400R and are designed to reflect your personal style or match the color palette of the boat. Either way, heads will turn, even if you won't be in view for long.

(Phantom Black available only with Red / Carbon graphics package)



RED

ORANGE

YELLOW

GREEN

PURPLE

BLUE

CARBON FIBER



RED

BLUE



## **DTS**

› Digital Throttle and Shift is a fully electronic throttle and shift system that offers smooth and predictable shifting and instant throttle response, similar to a modern sports car. DTS reduces the loud “clunk” associated with mechanical shifting for a high quality experience. Mercury Racing Zero Effort controls with Shadow Mode offer the ability to throttle and shift up to four engines with just two throttle and two shift levers for easier control at higher speeds.

## **BRAINS BEHIND THE BRAWN**

A big part of what makes the 400R so great is the suite of technologies that support the Verado platform. SmartCraft integrated marine technology is the brains behind the operation and the backbone for leading technologies like Digital Throttle & Shift and Joystick Piloting for Outboards. SmartCraft links the engine, controls, steering, and displays to provide data to keep the user informed of engine diagnostics and performance.



## **JOYSTICK PILOTING**

› Running full throttle in the open water is what the 400R was designed to do, but docking a large boat in wind and current can sometimes be a challenge. Joystick Piloting for Outboards takes away the anxiety by combining throttle, shift and steering into one easy to use joystick which is designed for maximum maneuverability at lower speeds. The 400R gives you maximum performance at high and low speeds with Joystick Piloting for Outboards.

**JOYSTICK PILOTING**  
**FOR OUTBOARDS**

TO LEARN MORE ABOUT MERCURY RACING'S SUITE OF TECHNOLOGIES  
OFFERED ON THE 400R PLEASE VISIT [WWW.MERCURYRACING.COM](http://WWW.MERCURYRACING.COM)

# SPECIFICATIONS

Hp / kW	400 / 294
Full Throttle RPM	6,400 - 7,000
Engine Type	Inline 6-Cylinder
Displacement	2.6L
Air Induction System	Supercharged with Cold Air Intake and charge air cooling and electronic boost pressure control
Fuel System	Sequential Multi-Port Electronic Fuel Injection (EFI)
Fuel Requirements	Recommended 95 RON Minimum 93 RON
Starting	Electric (Turn-key) with SmartStart
Exhaust System	Through Prop
Recommended Oil	Mercury Racing 25W-50 NMMA Certified FCW 25W-50 Synthetic Blend
Oil Capacity	8.0 Liters
Engine Management System	SmartCraft
Controls	SmartCraft Digital Throttle & Shift (DTS)
Engine Protection System	SmartCraft Engine Guardian
Minimum Centreline Mounting Distance	66 cm
Steering System	Electro-hydraulic power steering Joystick Piloting for Outboards
Gearcase	5.44" Offshore HD Sport Master in straight, left and right camber
Gear Ratio	1.75:1
Alternator / A	70 A / 882 Watt (Belt-Drive)
Counter Rotation	Available in both gearcases
Dry Weight*	303 kg
Shaft Length	508 mm 635 mm 762 mm
Colours	Phantom Black Cold Fusion White
Warranty	2-Year Limited for Recreational Boating 3-Year Limited Corrosion

\*Dry Weight for Lightest Model



[MercuryRacing.com](http://MercuryRacing.com)

# MERCURY RACING

© 2016 Brunswick Marine in EMEA. All Rights Reserved. Part #: 90-8M0104023

Brunswick Marine in EMEA continuously explores means to improve the products it designs, manufactures and distributes. Every effort is made to produce sales and service literature which is current. Changes to specifications of engines, boats and accessories are ongoing.

This brochure should not be regarded as a precise guide to the latest specifications. This brochure is also not an offer for sales of any particular engine, boat or accessory. Distributors and dealers are not agents of Brunswick Marine in EMEA or one of its affiliates and they have no authority to bind Brunswick Marine in EMEA by any express undertaking or representation, including but not limited to representations of product, sales, applications or service nature. Not all products are available in all countries and some are available only in limited quantities. Some products shown in this catalogue are equipped with optional accessories. Please see your local dealer. Visit <http://www.brunswick-marine.com>



The quality system of Brunswick Marine in EMEA is ISO 9001:2008 certified

